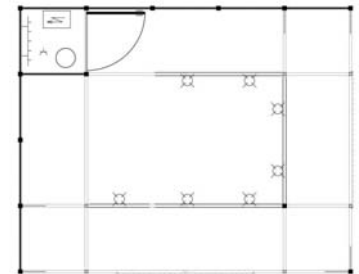




*Applications received after this date will be dealt with on a first come-first served availability basis.



Example: stand 20 sqm

Order:

We hereby order the construction and dismantling of a turnkey stand at the price of **295.00 Euro per sqm**. This price includes space rental, h+h-complete stand, construction and dismantling, proportional energy costs, the AUMA fee, stand cleaning and waste disposal during the fair. **The fee of 880,00 EUR for the marketing package is not included in the above mentioned price!**

Basic equipment

- System Octanorm Maxima light 40 x 40 mm, aluminum anodised
- white rear and side walls, overall height: approx. 300 cm
- Ceiling: double Octanorm Maxima light joist 40 x 40 mm, 1000 mm trough, along revolving booth limit
- Fascia: fascia panel 200 cm x 50 cm, along sides open to an aisle
- 1 cabin 1 x 1m with wooden door, white, lockable, in stands larger than 11 sqm
- Ribbed carpeting
- Main supply point 8 kW
- Electrical sub-distribution system up to 8 kW, 1 socket, 230 V
- Lighting: 1 35 W HQI spotlight per 3 sqm
- Clothes rail, waste-paper basket
- Waste disposal during the fair
- Daily stand cleaning

Text for lettering:

Company name, maximum of 20 letters, in Helvetica typeface, on each side open to an aisle.

- black (standard)
- blue
- red
- green

--	--	--	--	--	--	--	--	--	--	--	--	--	--	--	--	--	--	--	--	--

- Instead of an inscription of our Company Name, we would like an illustration of our logo for Euro 94.60 (as Digiprint).

- Ribbed carpeting:**
- charcoal (standard)
 - blue
 - red
 - green

Important information from Koelnmesse:

New feature: Place your order online at:
<http://stand.koelnmesse.com>

- Changes to the order or the additional accessories ordered must be made in writing. A processing fee of 50.00 Euro will be charged for each additional change made starting with the third change to the order, irrespective of the value of the order amendment.
- Stands will be handed over 24 hours prior to the start of the fair. Exceptions are subject to written arrangements.
- Please do not forget to send us both pages of this form!
- Please read the conditions on the reverse of this order form. Your signature indicates that you accept these conditions.

Important note: Please do not forget to send us both pages of this form!

Company _____ Responsible _____

Full address _____

Tel. _____ Fax _____ E-Mail _____

Date, signature and company stamp _____

Name of exhibitor:

0 9 0 0

Customer number:

In addition to the stand construction we order the following furniture package at a cost of 179.90 Euro each:

- _____ units: Furniture Package A; 179.90 EUR
1 standing table, 2 bar stools, 2 shelves (30 cm deep)
- _____ units: Furniture Package B; 179.90 EUR
1 information counter, 1 bar stool, 2 shelves (30 cm deep)
- _____ units: Furniture Package C; 179.90 EUR
1 table (70 x 70 cm), 4 chairs, 2 shelves (30 cm deep)

Please note:

It is **not** possible to exchange the package contents for other items!

We hereby declare that we have read and understood the Koelnmesse Terms and Conditions of Participation (General and Special Sections) and the Technical Guidelines and that we acknowledge them to be binding.
The aforementioned terms are valid for both the company's own representatives as well as independent agents, insofar as they have been commissioned to work at our stand. We are aware that as an exhibitor we are responsible for compliance with the stipulations and are liable for those persons commissioned by us. We accept as binding the stand plan and confirmation of inventory of equipment which will be sent to us following submission of this order.
The order may be cancelled up to six weeks before the stand construction period officially begins. Koelnmesse GmbH is not obliged to honour cancellations received after this deadline.
Koelnmesse is entitled to contract a partner company to provide the service ordered. Such a service partner acts in the name of and on behalf of Koelnmesse.
Place of performance and jurisdiction is Cologne. It is agreed that the laws of the Federal Republic of Germany apply.



Furniture Package A



Furniture Package B



Furniture Package C

In addition to the basic equipment, we hereby order the following items (for an additional fee):

Quantity		Order no.	Price per unit EUR
Floor and wall construction			
r.m.	Maxima wall element, HAFA white approx. 300 cm high	ssbs110	69.30
unit(s)	Folding door, lockable	ssba230	123.40
unit(s)	Wooden door, lockable, white	ssba240	123.40
unit(s)	Curtain (additional), black	ssba810	54.20
sqm	Platform, approx. 20 mm high	ssba020	18.90
sqm	Platform, approx. 50 mm high	ssba050	26.50
sqm	Platform, approx. 100 mm high	ssba010	35.40
r.m.	Backlit edge of the platform, approx. 100 mm high	ssba015	61.50
sqm	Laminate floor, beech design	ssba500	57.40
Fixtures			
unit(s)	Decorative panel, white, approx. 95 x 95 cm	ssba180	42.90
unit(s)	Shelving, straight, 100 x 30 cm	ssba130	28.90
unit(s)	Shelving, straight, 100 x 40 cm	ssba135	37.50
unit(s)	Shelving, slanting, 100 x 30 cm	ssba131	34.60
unit(s)	Shelving, slanting, 100 x 40 cm	ssba136	47.80
unit(s)	Peg board, white, approx. 95 x 95 cm	ssba440	48.10
r.m.	Built-in collection rail	ssba370	35.80
Platforms, display cases, counters			
unit(s)	Octanorm platform 70 x 70 + 50 cm	ssbo195	87.60
unit(s)	Table display case with glass top Octanorm 100 x 50 + 104 cm	ssbo750	137.00
unit(s)	Octanorm showcase, glazed, 70 x 70 + 205 cm, lockable	ssba880	287.80
unit(s)	Octanorm info counter 100 x 50 + 104 cm, open at rear	ssba320	137.60

Quantity		Order no.	Price per unit EUR
Platforms, display cases, counters			
unit(s)	Sliding door fittings for info counter	ssba132	40.90
r.m.	Bar and info Counter, type 05 (Stripes), bottom and top white	ssba200	275.80
Furniture			
unit(s)	Sideboard, lockable, approx. 80 x 42 + 72 cm	ssba570	74.90
unit(s)	Table, white top, approx. 70 x 70cm	ssba770	38.30
unit(s)	Table, white top, approx. 110 x 70 cm	ssba760	38.30
unit(s)	Table, white top, round, approx. 70 cm	ssba775	38.30
unit(s)	Standing table, white top, approx. 110 cm high	ssba790	72.10
unit(s)	Standard upholstered chair, black	ssba480	29.40
unit(s)	Standard bar stool, black	ssba110	28.60
unit(s)	Refrigerator, approx. 145 l, incl. electric socket	ssba380	92.10
unit(s)	Sink with boiler and electric socket	ssba620	148.40
unit(s)	Sink with 2 canisters and electric pump	ssba621	161.40
unit(s)	Standard brochure stand	ssba510	76.30
Graphics			
unit(s)	Additional letter, foil plot	ssba283	4.10
sqm	Digital print for fascia or wall elements from printable file	ssba520	112.50
Lighting / electric			
unit(s)	Rail spotlight, "Standard" 35 W HQI	ssba690	42.50
unit(s)	Spotlight with side arm, 35 W HQI	ssba710	42.50
unit(s)	Standard socket, 230V	ssba670	26.20

Important information

Please note!

- Deadline for placing your order:
8 weeks before the start of official assembling.
- All prices given are net prices. The VAT applicable to each item will be charged at the valid rate.
- Koelnmesse offers a big selection of furniture. The employees of Koelnmesse will be happy to provide you with assistance.
- Place your order online at: <http://stand.koelnmesse.com>
- You can indicate your preferred ground plan and the position of the additional equipment on the form.
- Orders received after the deadline for submission mentioned above are subject to a surcharge of 10% of the basic price and must be confirmed in writing by Koelnmesse.
- Changes to the order or the additional equipment ordered must be made in writing. A processing fee of 50.00 Euro will be charged for each additional change made after the second change to the order, irrespective of the value of the order amendment.
- Stands will be handed over 24 hours prior to the start of the fair. Exceptions are subject to written arrangements. Stand construction and other objects are provided for use for the duration of the event.
- The invoice for the stand construction will be sent at the same time as the order confirmation. The invoice is payable immediately upon receipt without deductions. The stand may not be occupied until payment for the stand construction work has been made.
- Please read the General Terms and Conditions for the "complete stand h+h 2018" stand. Your signature indicates that you accept these conditions.

Koelnmesse Group special terms and conditions of business for services – Stand construction –

By signing and returning the order form, the General Terms and Conditions of Koelnmesse for services, these special terms and conditions, and subordinate and in addition, the general terms and conditions of business of the service partner are recognized as binding parts of the contract. The specified conditions can be requested from Koelnmesse. The conditions are also available for download from www.koelnmesse-service-portal.de. All provisions apply to both the company's own as well as to independent stand designers, decorators, and signwriters and to all persons, in as far as they perform activities as commissioned by the exhibitor or on the exhibitor's behalf in connection with the construction and design of the stand. The exhibitor is responsible for ensuring that all regulations are complied with. The exhibitor must supervise construction personnel and other persons working on their behalf to ensure that they adhere to the regulations. The exhibitor is liable for all damages to leased objects caused by the exhibitor, his employees, commissioned third parties or other persons who he has caused to fulfil his obligations or are acting on his behalf.

All prices given are net prices. VAT will be charged additionally at the statutory rate.

Complaints regarding goods and services supplied must be submitted in writing immediately, or at the very least, at some time during the event in question.

You may cancel the stand construction order only if you do so no later than six weeks before the stand construction period officially begins. The date on which Koelnmesse receives the exhibitor's declaration is the criterion for determining if the deadline has been met. For cancellations received after the deadline, Koelnmesse is entitled to charge a flat-rate fee for the costs incurred. These costs amount to 30% of the agreed fee in the event of a cancellation within 4–6 weeks prior to the start of construction, 50% of the agreed fee in the event of a cancellation within 2–4 weeks prior to the start of construction, and 100% of the agreed fee in the event of a cancellation at a later time or during the construction of the stand. The agreed fee has to be paid in full for individually crafted or purchased components and graphics.

Koelnmesse is entitled to contract a partner company to carry out the service ordered. In this event, such a company will operate in the name and on behalf of Koelnmesse.

The technical guidelines are to be observed. The technical guidelines can be requested from Koelnmesse by calling +49 221 821-3998 or can be downloaded from www.koelnmesse.de.



Falttür
Folding door
Artikelnr.: · part no.: ssba230



Holztür
Wooden door
Artikelnr.: · part no.: ssba240



Vorhang
Curtain
Artikelnr.: · part no.: ssba810



Dekoplatte
Decorative panel
Artikelnr.: · part no.: ssba180



Lochplatte
Peg board
Artikelnr.: · part no.: ssba440



Kollektionsstange
Built-in collection rail
Artikelnr.: · part no.: ssba370



Regalbord gerade
Shelving, straight
Artikelnr.: · part no.: ssba130



Regalbord schräg
Shelving, slanting
Artikelnr.: · part no.: ssba131, ssba136



Podest Octanorm
Octanorm platform

Artikelnr.: · part no.: ssbo195



Tischvitrine + Glasaufsatz Octanorm
Table display case + glass top Octanorm

Artikelnr.: · part no.: ssbo750



Vitrinenelement Octanorm
Octanorm showcas

Artikelnr.: · part no.: ssba880



Informationstheke Octanorm
Octanorm info counter

Artikelnr.: · part no.: ssba320



Bar- und Informationstheke Typ 05
Bar and info counter type 05

Artikelnr.: · part no.: ssba200



Sideboard
Sideboard

Artikelnr.: · part no.: ssba570



Tisch
Table

Artikelnr.: · part no.: ssba770, ssba760



Tisch rund
Table round

Artikelnr.: · part no.: ssba775



Stehtisch
Standing table

Artikelnr.: · part no.: ssba790



Polsterstuhl Standard
Standard upholstered chair

Artikelnr.: · part no.: ssba480



Barhocker Standard
Standard bar stool

Artikelnr.: · part no.: ssba110



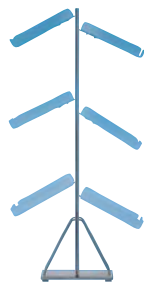
Kühlschrank
Refrigerator

Artikelnr.: · part no.: ssba380



Spüle mit Boiler
Sink with boiler

Artikelnr.: · part no.: ssba620



Prospektständer
Brochure stand

Artikelnr.: · part no.: ssba510



Stromschienenstrahler
Rail spotlight

Artikelnr.: · part no.: ssba690




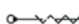






Strahler mit Auslegearm
Spotlight with side arm

Artikelnr.: · part no.: ssba710

Um die von Ihnen gewünschte Installation ordnungsgemäß durchführen zu können, ist die Beifügung einer Standskizze mit den eingezeichneten Anschlusswünschen oder die Erstellung einer Skizze unbedingt erforderlich.

To enable the installations you require to be carried out correctly, please ensure that you enclose a stand sketch that includes your requested connection points.

Symbole zur Erstellung der Standskizze:

	= Holztür Wooden door		= Falttür Folding door		= Vorhang Curtain		= Regal Shelves
	= Steckdosen Electric sockets		= Stuhl Chair		= Tisch Table		= Strahler Lights

= _____

1 m

1 m